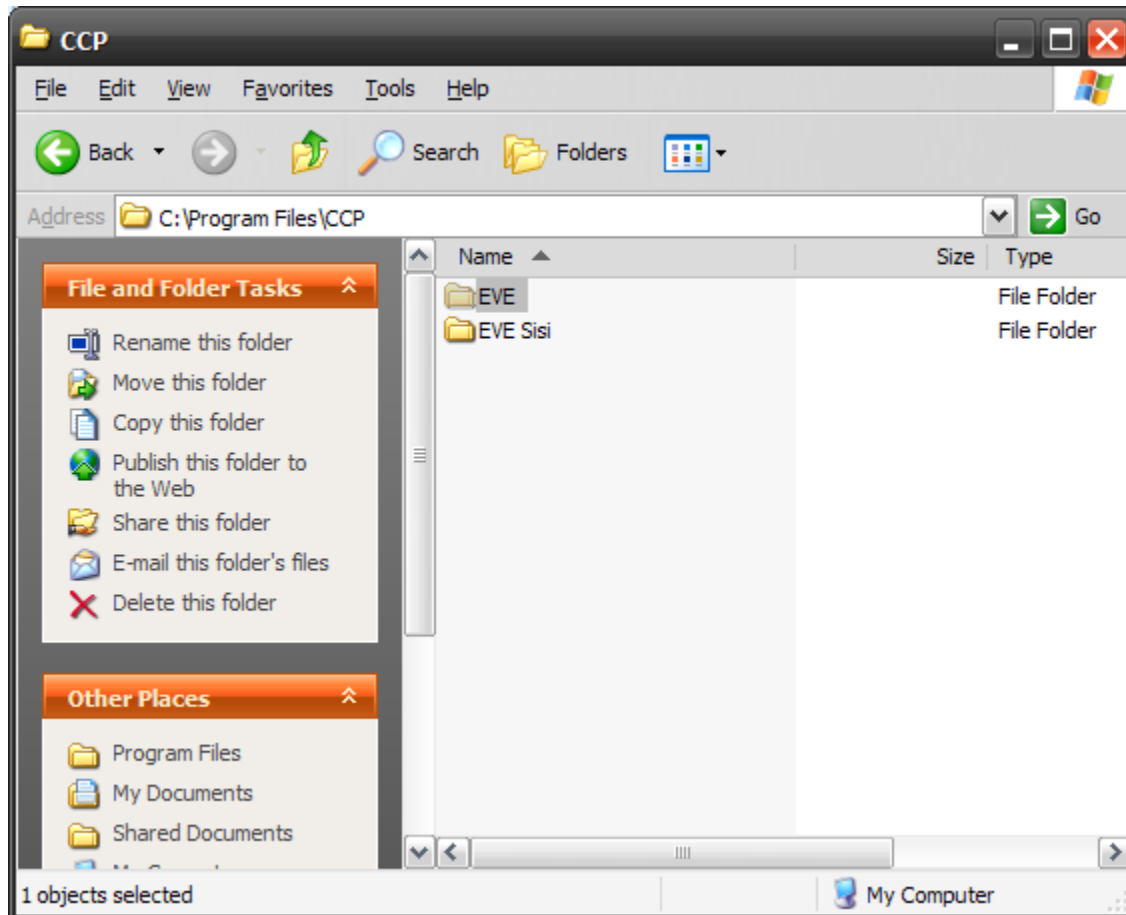
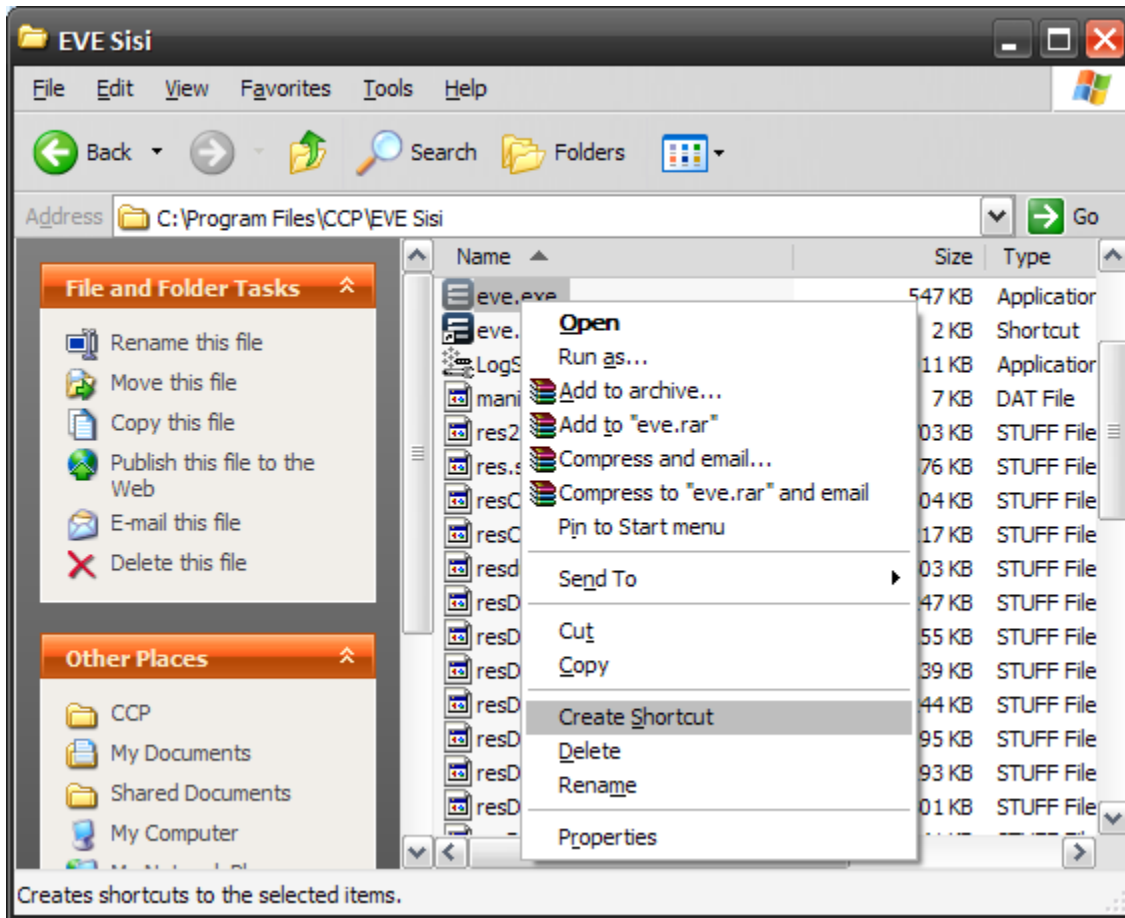


# How to install EVE Online Singularity “Sisi”

1. Go to C:\Program Files\CCP folder and duplicate (copy then paste) the EVE folder.
2. Rename the copied EVE folder “EVE Sisi” as shown below.



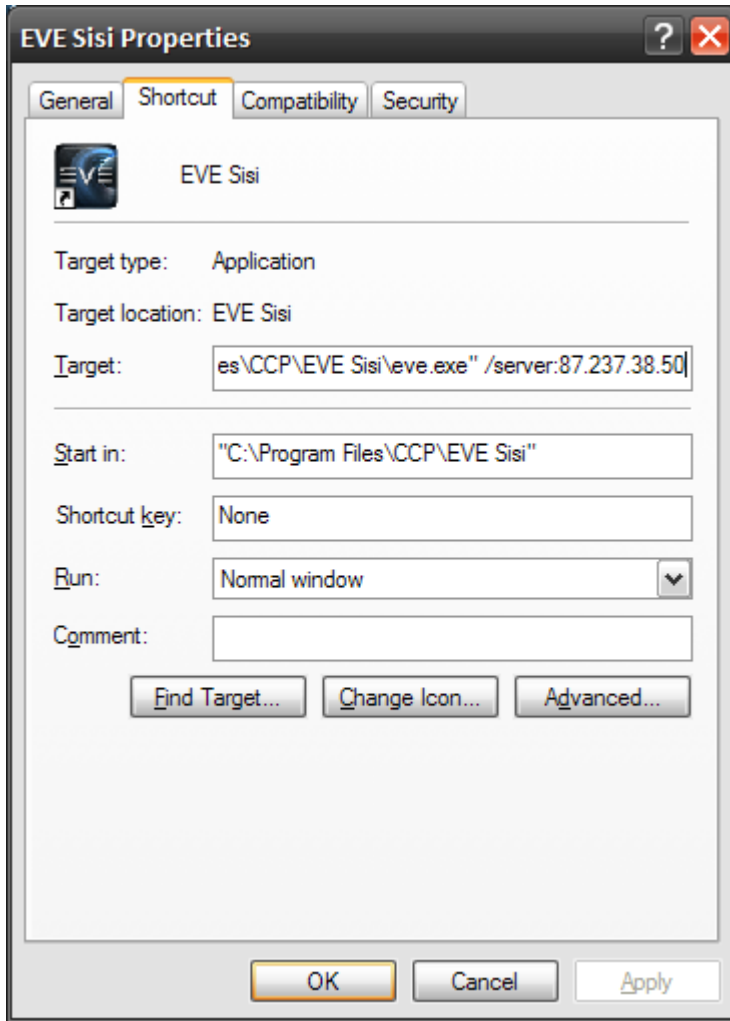
3. Open the EVE Sisi folder
4. Right click "eve.exe" and click on Create Shortcut



5. Move the shortcut to your desktop and close the explorer window
6. Rename the shortcut on your desktop from "Shortcut to eve.exe" to "EVE Sisi"



7. After you have renamed the shortcut on your desktop, right click the “EVE Sisi” shortcut and go to properties.



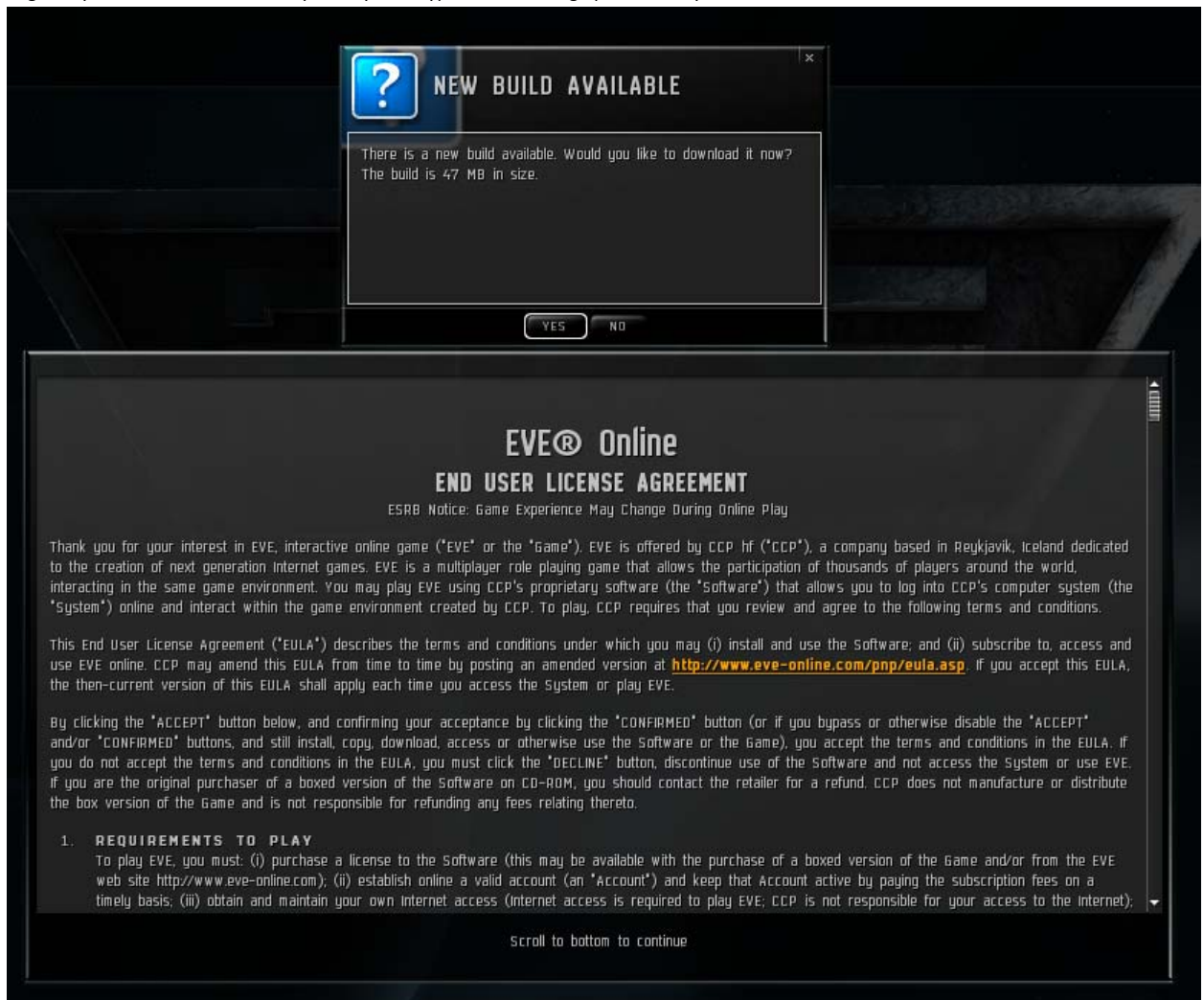
8. Append the following **at the end** of the Target field “ /server:87.237.38.50”. Do not forget to put a space between the path in quotes and the /server option.
9. Click OK to apply the changes and close the window.



10. Double click "EVE Sisi"

11. At the login screen, you should get a message saying New Build Available. Click Yes to start downloading the most recent patch.

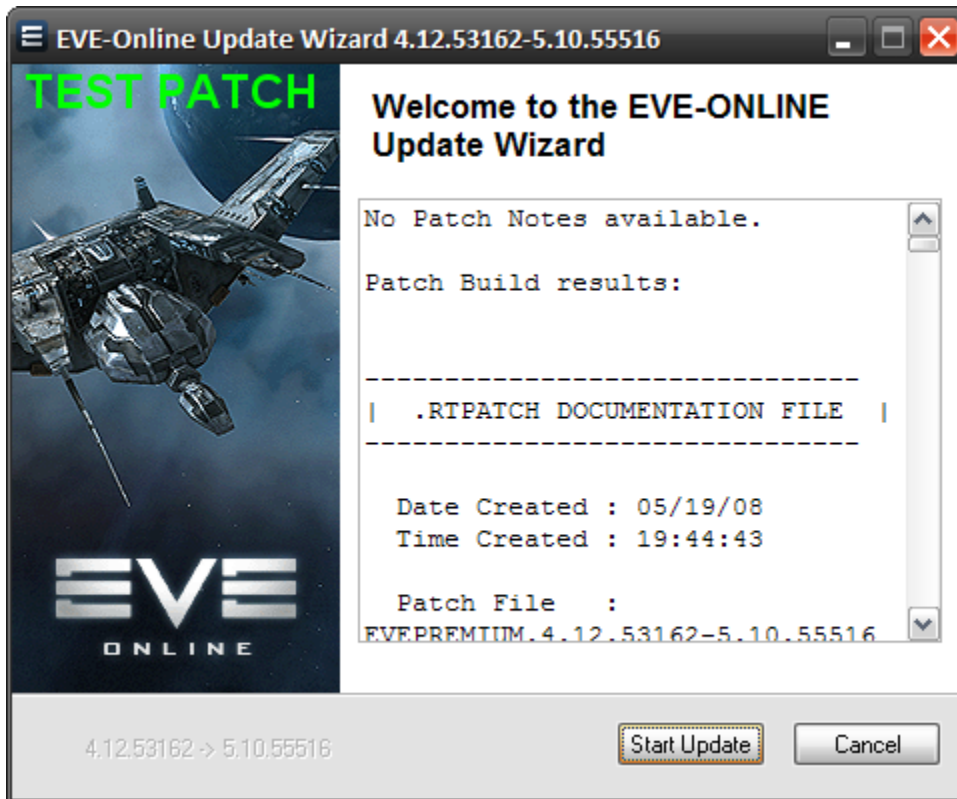
- a. If you don't get the message, you might be already running the current version (like a Singularity patch just deployed on Tranquility), the Singularity server could be down or you may have typed in the wrong option when you edited the shortcut.



12. Watch the progress and once the download is complete, it will tell you that it is “Ready to Patch”. Click OK.

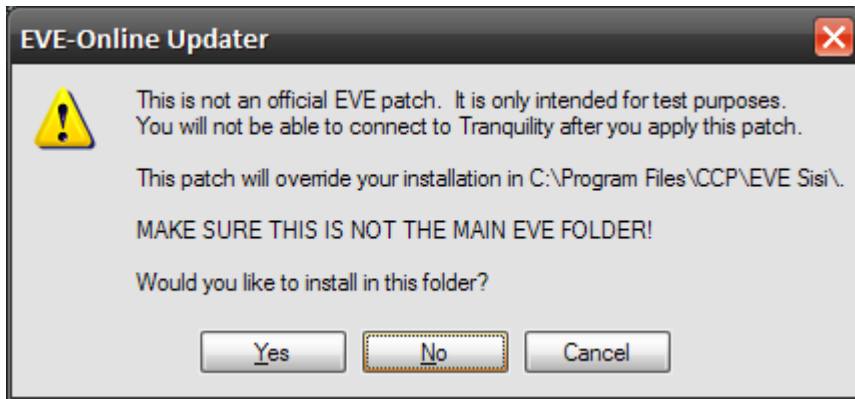


13. EVE will close and the patch application will open.

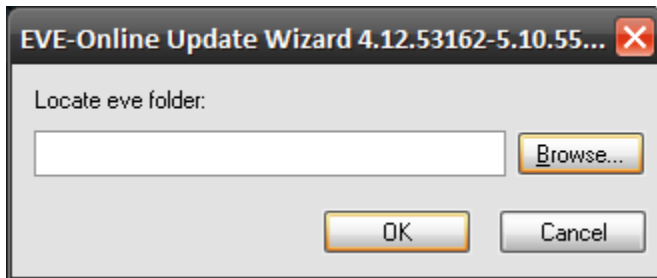


14. Click on Start Update

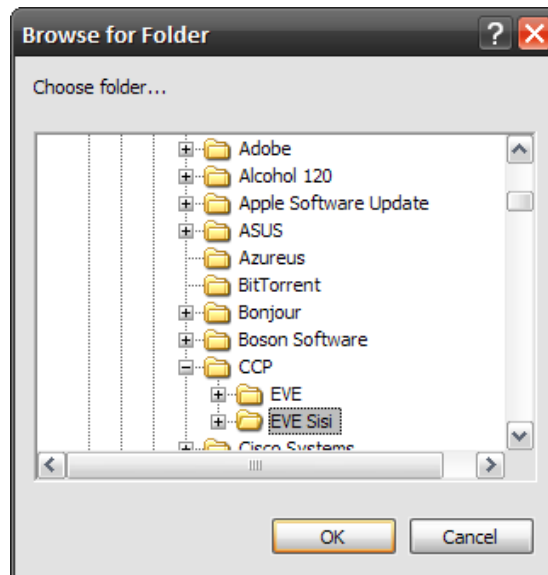
15. VERY IMPORTANT. You will get a notice asking if you want to install EVE in the default folder. MAKE SURE YOU SAY NO. You do not want to patch your main install.



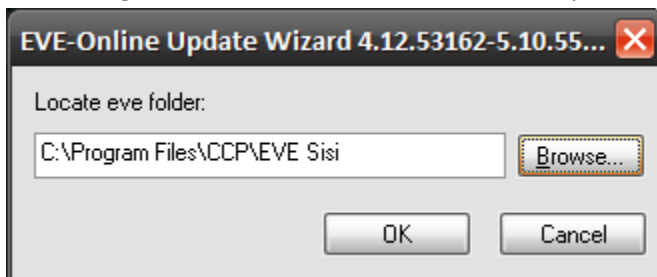
16. Once you've clicked no, it will ask you to locate which EVE installation you would like to patch. Click on Browse...

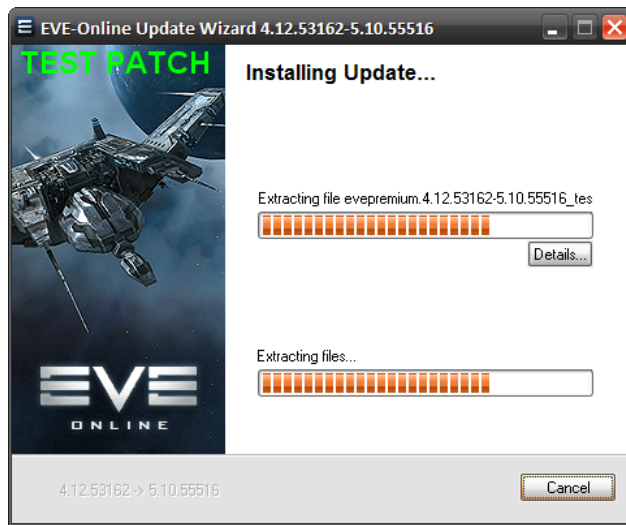


17. Navigate through your computer and highlight the "EVE Sisi" folder. (Default location is My Computer -> C -> Program Files -> CCP)

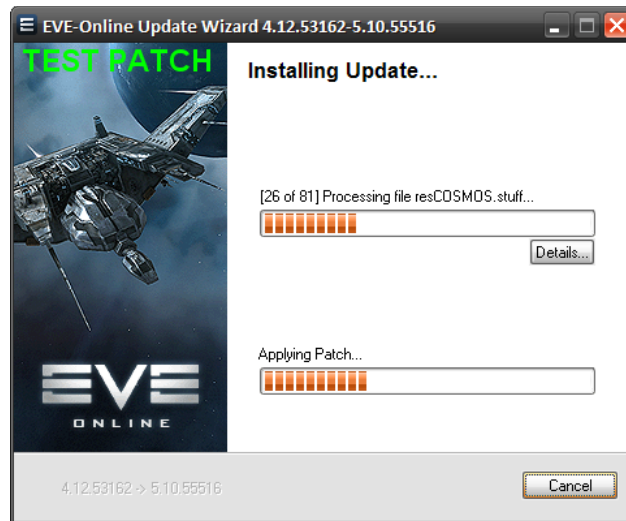


18. Click OK once you have highlighted "EVE Sisi"  
19. Click OK again to confirm the location of where you will be patching.

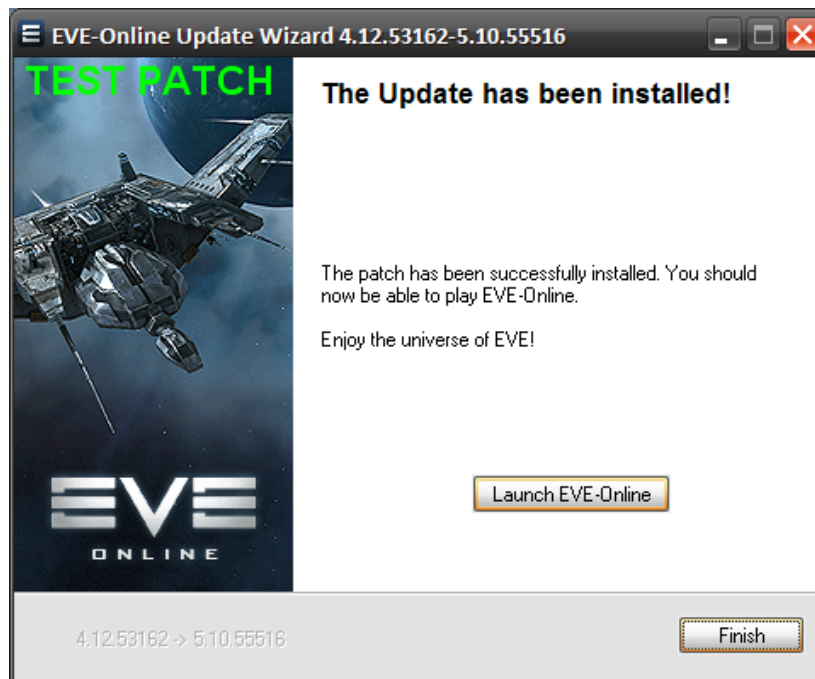




20. The update is installing.



21. And installing some more...



22. And it's done!!!

23. Click Launch EVE-Online.

24. Ooooooh this is getting goooood!!!!



25. AND YOU'VE DONE IT!!!! (Please notice that the server on the bottom says TEST SERVER instead of Tranquility.)  
a. You may also need to accept the EULA.

